

THE ALL NEW

AS PSYCHOLOGY

STARTING SEPT. '08
 NOW CONSISTING OF **2** MODULAR EXAMS.

WHAT YOU WILL STUDY...

PSYCHOLOGY IS THE STUDY OF THE RELATIONSHIP BETWEEN YOUR BRAIN AND YOUR BEHAVIOUR.



- ## MODULE 1
- COGNITIVE PSYCHOLOGY
 - DEVELOPMENTAL PSYCHOLOGY
 - RESEARCH METHODS



MODELS OF MEMORY

UNDERSTANDING HOW OUR MEMORY IS STRUCTURED AND HOW WE CAN USE THIS TO UNDERSTAND EYEWITNESS RELIABILITY



ATTACHMENTS



THE IMPACT OF EARLY ATTACHMENTS AND THEIR CONSEQUENCES

THE EFFECTS OF DAY CARE

RESEARCH METHODS

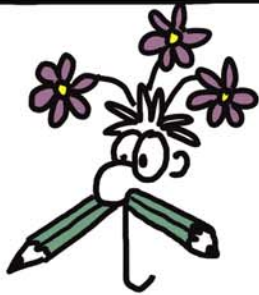
- EXPERIMENTS
- OBSERVATION
- QUESTIONNAIRE
- CASE STUDY

MODULE 2

- BIOLOGICAL PSYCHOLOGY
- SOCIAL PSYCHOLOGY
- INDIVIDUAL DIFFERENCES



CONFORMITY AND OBEDIENCE.
- WHY DO WE DO THE THINGS WE DO?



- HOW DO WE DECIDE WHAT IS NORMAL OR ABNORMAL?
- THERAPIES

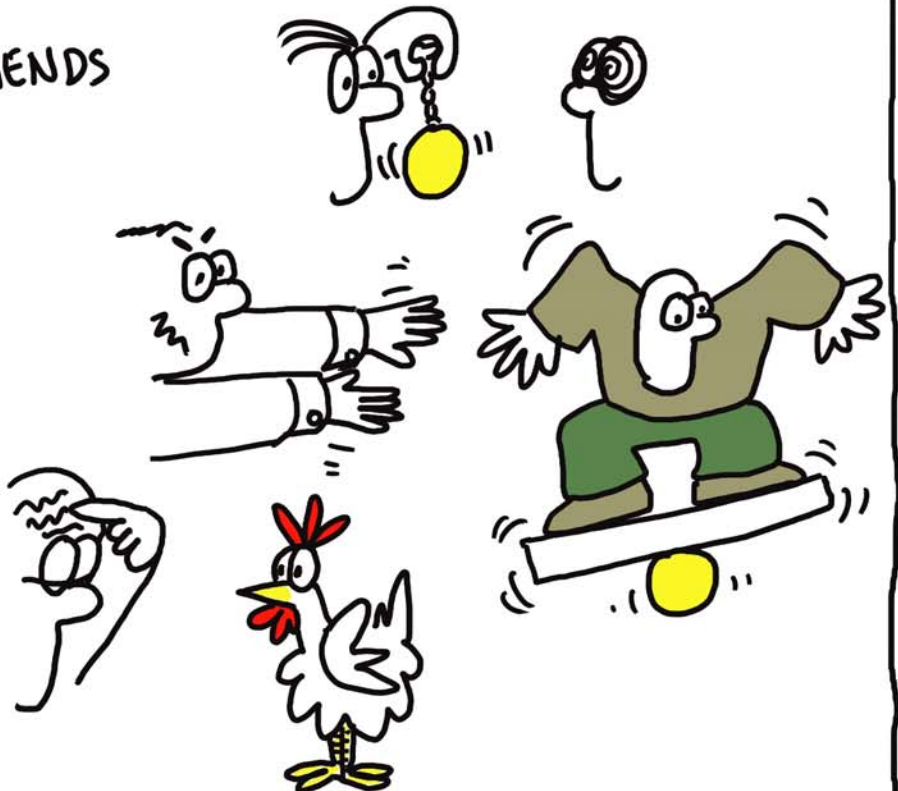


PSYCHOLOGY IS A **SCIENCE** AND THE CONTENT IS VERY **SCIENTIFIC** IN NATURE - THIS IS WHY YOU NEED A GCSE PASS IN **SCIENCE** AS WELL AS MATHS AND ENGLISH.

DON'T COME MOANING TO US SAYING THAT YOU DIDN'T KNOW IT WAS A **SCIENCE**!

THINGS YOU ARE NOT GOING TO LEARN :-

- HOW TO HYPNOTISE FRIENDS AND FAMILY.
- EVIL MIND CONTROL TECHNIQUES.
- HOW TO READ MINDS



BY ITS NATURE THE COURSE COVERS SENSITIVE ISSUES SUCH AS MENTAL HEALTH, FAMILY ISSUES AND OTHERS. IT IS VALUABLE FOR US TO KNOW IF THESE MAY BE PROBLEMATIC FOR YOU.