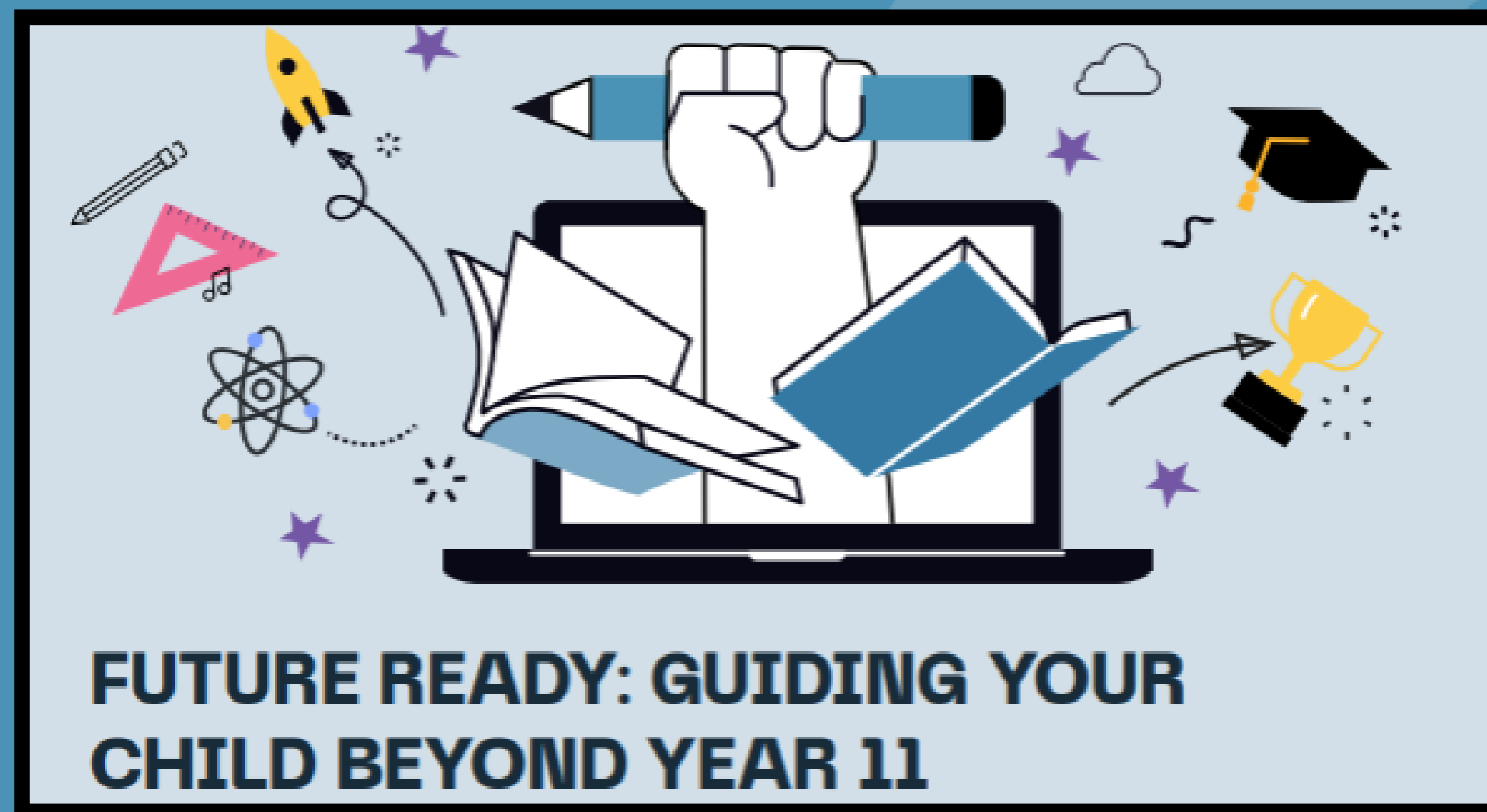




**BEAUCHAMP**  
**COLLEGE**  
CAREERS LEARNING



FUTURE READY  
GUIDING YOUR CHILD BEYOND YEAR 11

# WELCOME AND INTRODUCTION



**Alison Spathaky**  
Career Lead



**Lucy Fitzpatrick**  
Teacher of MFL/  
Head of Year 10



**Taranjit Singh**  
Associate Head  
of Key Stage 4



**Donna Enriquez**  
Assistant Head of  
Year



**Jim Ardley**  
Assistant Principal  
Inclusion



**Natalie Billington**  
Teacher of PE &  
Assistant SENCo



**Harpreet Maan**  
Admin Assistant

## Working Together to Support Your Child's Future

Thank you for joining us this evening your support makes a real difference. Career learning is a whole school approach  
Tonight's session is packed with important information to help guide your child through Year 11 and beyond.

- Looking at What is happening in the world of work.
- How the 3 A's, Attainment, Attendance and Attitude link to next steps.
- Suggestion on how parents/carers could support their child with post 16 decision making.
- Include time for Q&A, so please feel free to ask questions.

# WHY PARENTS & CARERS MATTER IN CAREER DECISION MAKING



## *You Are Their Biggest Influence*

- Young people value parents' advice most
- Careers conversations at home are powerful
- You don't need to have all the answers just be open and supportive











### The World of Work is Changing

- More jobs in health, tech, green industries
- Employers value **skills** like teamwork, resilience, and communication
- Fewer “jobs for life” – many young people will have several careers

# LABOUR MARKET INFORMATION (LMI)

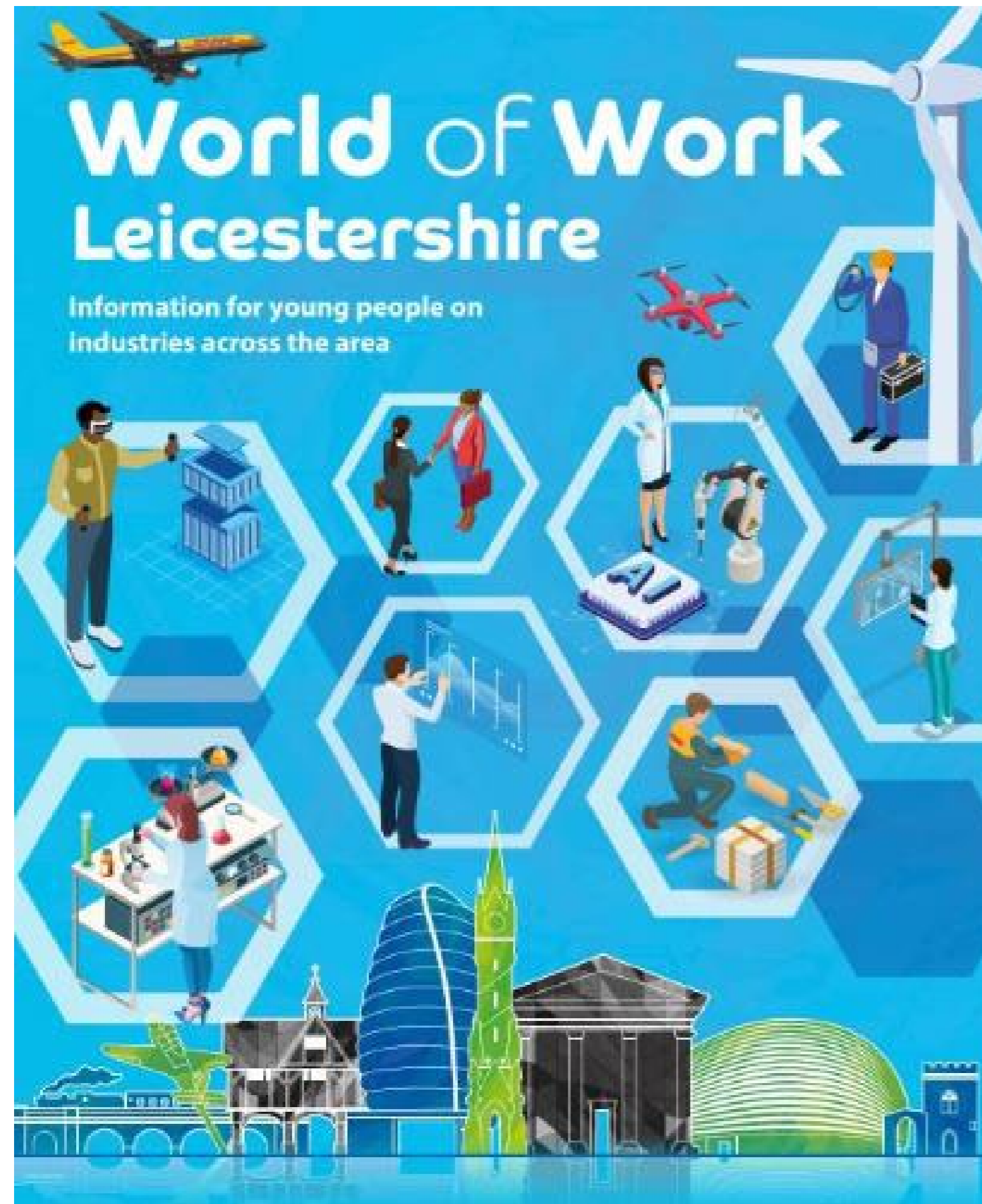
## WHAT'S HAPPENING NOW? WHAT JOBS ARE AVAILABLE LOCALLY?



What is changing?	How can it affect jobs?	Impact	Which job areas will be important?
New technology is being developed all the time	Loss of some traditional jobs 	Change in skills needed	Electronics, Robotics, Cyber Security & Data Science
People are living longer 	More support needed for people	Large demand for health and social care	Health Care, Social Care, Life Sciences, Pharmacology
Pace of change is speeding up	New skills need to be learnt quickly	Exciting new opportunities, AI and new technology 	Innovation is desperately needed – flexibility, problem solving
The skills around the world are improving 	More competition	IT enables people to be delivering work here from other countries	Education, Science, Engineering, Creative and Media, Finance
Environmental awareness is growing	Research and development on energy saving	Wide variety of roles in all sectors, skilled engineers and mechanics 	Engineering, Chemical Processing, Energy & Utilities
Increase in well-being and leisure 	Demand for catering, health and fitness and gaming	Growth in tourism, spa facilities & fitness	Health & Beauty, Sport and Leisure, Hospitality



# LOOK AT LEICESTER AND LEICESTERSHIRE



**99.6%**   
**OF BUSINESSES  
LOCALLY ARE  
MICRO** (0-9 STAFF)  
**SMALL** (10-49 STAFF)  
**OR MEDIUM**  
**ENTERPRISES** (50-249 STAFF)

## **Businesses tell us:**

Value young people with good communication skills & strong work ethics

Useful skills are digital, problem solving, adaptability

Be open to different sectors, there are a range of opportunities in most sectors

Ideally 5 good GCSE results including English, Maths & Science

Work experience or voluntary experience is valued

Students at Beauchamp in year 10 have been given this booklet



### Health & Social Care



Over **350 different careers** in the NHS



The NHS is the employer that advertises the most jobs locally



Growing use of technology in Health and Social Care



**Communication and strong people skills are highly valued!**



Leicestershire is world renowned for services in Cardiovascular and Respiratory Medicine



22% of roles locally are in nursing – 94% of graduates are in work within 3 months and UK qualifications are internationally recognised.

Useful subjects: Maths, English, Science, ICT, Psychology, Sociology



[Explore Roles](#)

[Take a Careers Quiz](#)

[Career Planning](#)

[Working in health | Health Careers](#)



## Creative

The sector is all about **generating original ideas and products**

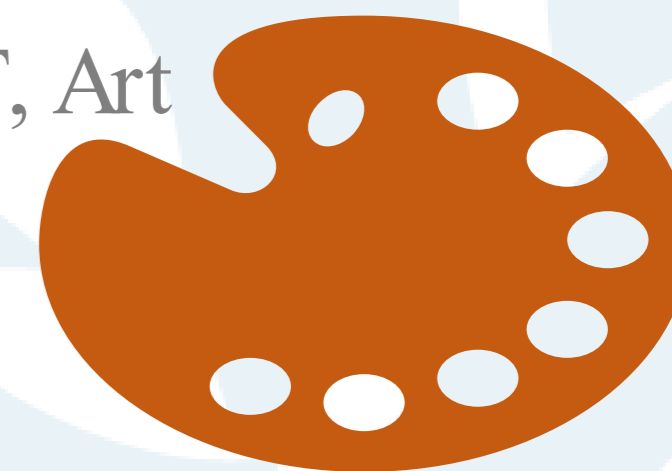
**Arts / Culture / Creative Media**

**Jobs include** Design, Film & Video Production / Marketing / Advertising / Computer Game Development / Animation  
**Shortages in Skills** – 3D Designers, Digital Media / Broadcast Engineers

**Check out - Rock  
Kitchen Harris /  
Twist and Shout /  
Colab Creation /  
Bulb Studios**

Pathways – T-Level in Digital, Design and Development / high percentage of graduates in the sector

Useful subjects:  
English, Maths, ICT, Art  
& Design, Media





### Sport and Physical Activity

Useful subjects:  
Biology, Maths, PE,  
Chemistry, English



Range of opportunities include coaching, analysing performance, developing sport related businesses, nutritionists, grounds keepers

Leading sporting teams – Leicester City Football Club / Leicester Tigers / Leicester Riders / Leicester Hockey Club



Loughborough University is ranked number 1 in the world for sports related subjects

Pathways – Top skills include communication & teamwork  
Volunteering is a great way to access the sector  
Apprenticeships available

[Careers - Youth Sport Trust](#)



### Engineering and Advanced Manufacturing

Useful subjects:  
Maths, Physics, ICT,  
Design Technology



Second highest paying sector in the area, accounts for 11% of the regions workforce

Careers include **Research, Testing, Developing prototypes, Production Engineering & Maintenance**

Predicted skills shortage in 10 years time as engineers retire from the workforce

Loughborough Science Park and MIRA Technology Park leading research and development in Europe

Pathways – Routes in at all levels. Vocational learning is highly valued. Third highest sector in the area. Apprenticeships available

[Caterpillar | Desford Apprenticeship Opportunities](#)

Apprenticeships advertised on the Mira Technology website. L2 to Degree Level available.

[Apprenticeships Archives- Page 2 of 3- MTI](#)

# LABOUR MARKET INFORMATION (LMI)

## WHAT'S HAPPENING NOW? DIGITAL



### Digital

Fast growing future proof sector

AI is profoundly impacting the sector

Skills are highly valued – highest average wage compared to other sectors – much in demand

Cyber Security skills massively in demand with high wages

Pathways – All sectors require Digital Skills. Apprentice IT technician, Digital Content roles, Website design.

[Free support for Leicester and Leicestershire businesses: Assess your AI readiness](#)[Digital Leicestershire](#)

[Managed IT Support Leicester from Realtime IT Solutions](#)

Useful subjects: Maths, Computing, ICT, Design Technology





### Logistics & Distribution

Useful subjects: Maths, Business and Admin, ICT, Languages



Golden Triangle of Logistics—transport network  
Sector is set to grow by 10% by 2023

Magna Park is Europe's largest distribution centre and East Midlands Airport is the UK base for FedEx, DHL and UPS—the UK's busiest cargo airport

**Problem Solving Skills** **Adaptability** and **Calm under Pressure** are highly valued!

Pathways – Entry Level include Distribution Clerk, Customer Services. Apprenticeships & Graduate schemes in planning and purchasing

[Pall-Ex UK | Palletised Freight Distribution](#)

[Generation Logistics | Where Talent Meets Opportunity](#)

[Magna Park Lutterworth](#)

# LABOUR MARKET INFORMATION (LMI)

## WHAT'S HAPPENING NOW? CONSTRUCTION



### Construction

180 different roles in the sector, including HR / Marketing / Surveying

Useful subjects: Maths, Sciences, ICT, Design Technology,



A highly dynamic and critical sector, includes the planning, designing and construction of buildings, infrastructure including roads and railways. Employs nearly 30,000 people locally and if willing to travel offers high wages and great opportunities to progress.

Local companies offer great apprenticeship opportunities including – **Ibstock Brick, Caterpillar, Breedon Group and Aggregate Industries.**

**Sector to grow by 14.8 % by 2030–housebuilding!**

Pathways – Over 30 different apprenticeships in the sector locally. Construction Skills Hub can offer local support – [www.leicesteremploymenthub.co.uk](http://www.leicesteremploymenthub.co.uk)

[Skills Bootcamps](#)

[Early Careers- Ibstock](#)

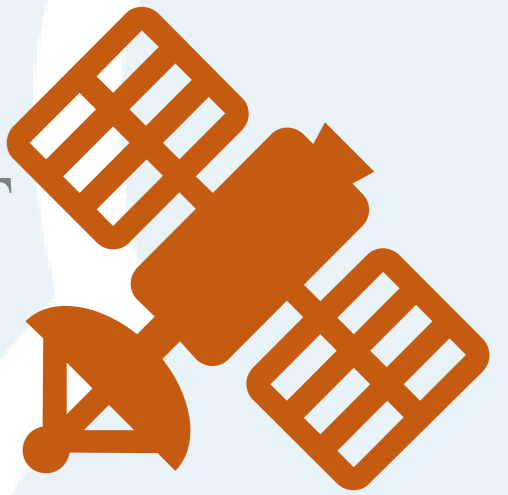
# LABOUR MARKET INFORMATION (LMI)

## WHAT'S HAPPENING NOW? SPACE

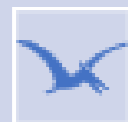


### Space

Useful subjects: Maths, Sciences, Geography, IT



One of the **fastest growing** sectors locally! Leicester and Leicestershire is the UK's **leading location** for space.



Space information and research informs our modern life including medical devices, SatNav, climate monitoring and high-speed communications!



2<sup>nd</sup> largest campus based cluster with a dedicated space focus in the UK. Strong links with Leicester University.

Pathways – Most careers need high level engineering, maths and science qualifications. UK's first post 16 Space Engineering course offered by Loughborough College

[Home - Space Park Leicester](#)

# THE BIG THREE – ATTAINMENT, ATTENDANCE, ATTITUDE



**Attainment**

**Attendance**

**Attitude**

*What Employers & Colleges Look For*

- **Attainment:** What the grades mean
- **Attendance:** Being in school and on time
- **Attitude:** Taking responsibility, showing effort and curiosity

# UNDERSTANDING QUALIFICATION LEVELS



**DO YOU  
KNOW  
YOUR  
LEVELS?**



**RESOURCEFUL CAREERS**  
insightful innovative inspirational

## Understanding Levels

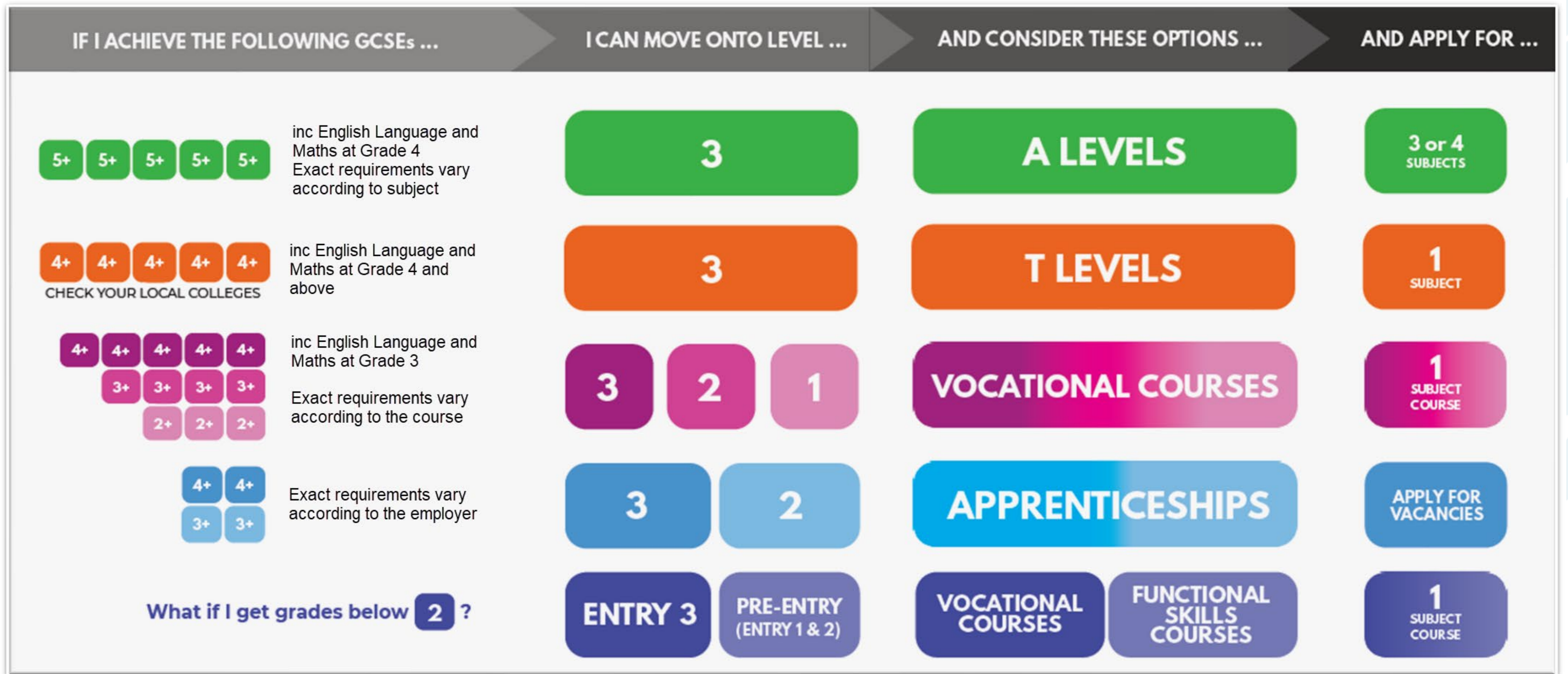
*What Do Qualification Levels Mean?*

# POST 16 OPTIONS

## UNDERSTAND THE OPTIONS AVAILABLE AFTER YEAR 11



Grades from **November trials** will be used on Post 16 applications.



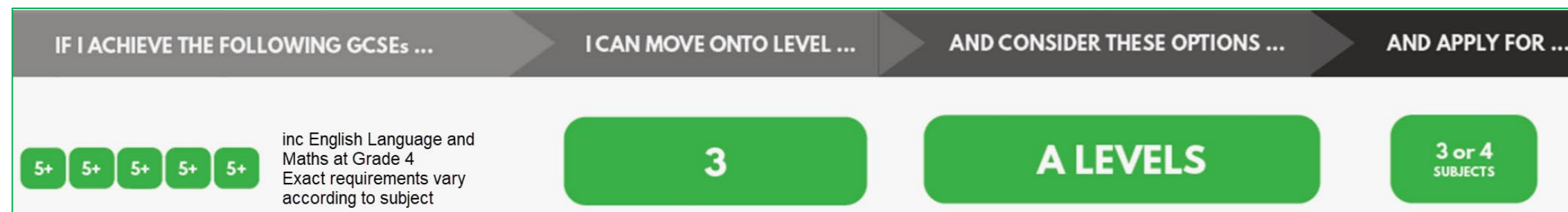
# POST 16 ROUTES FOR BEAUCHAMP STUDENTS



## A Levels

**Level 3 Qualification Check Providers**  
for Entry Requirement

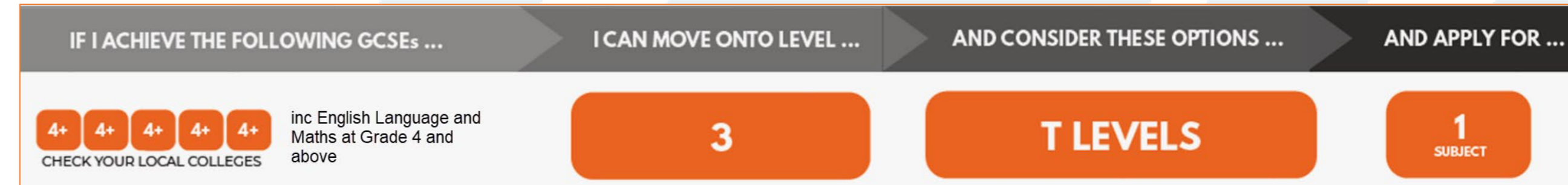
A Levels last for two years and allow you to focus on the academic subjects that you enjoy the most. They are an academically demanding route which are exam focused. Students usually progress to higher education or may pursue employment or an Apprenticeship.



## T Levels

**Level 3 Qualification Check Providers**  
for Entry Requirement

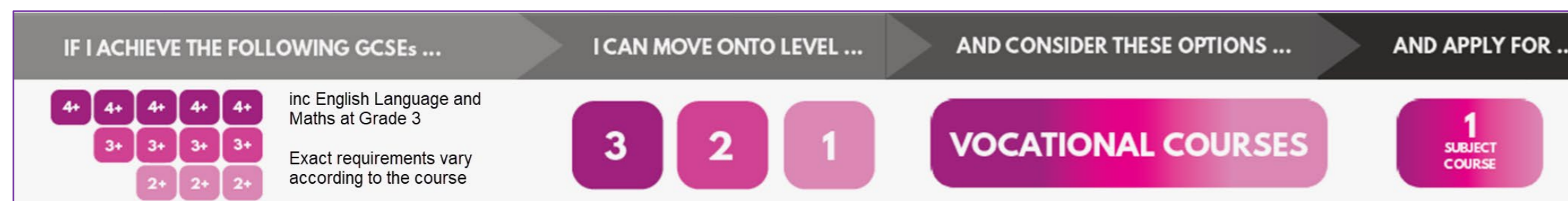
Studied over two years T Levels have been designed in collaboration with employers and businesses to bring classroom learning and an extended industry placement together. T Levels are equivalent to studying three A Levels and offer a mixture of classroom learning and on-the-job experience.



## BTEC & Vocational

**Level 1,2 & 3 Qualification Check Providers**  
for Entry Requirement

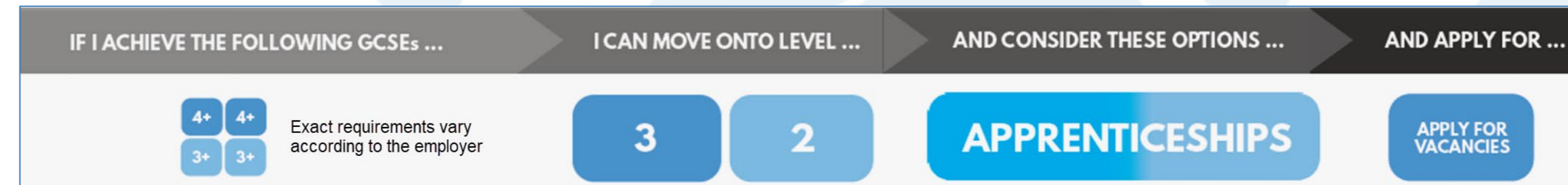
BTECs and other vocational diplomas usually last up to two years. They involve practical work, as assessed coursework and, in some instances, exams. They carry UCAS points, so you can progress to higher education if you wish to. Alternatively, on completion you can pursue employment or an Apprenticeship.



## Apprenticeships

**This is a contract of work Level 1,2,3 Qualification Check Providers**  
for Entry Requirement

Apprenticeships last between one and four years and are available in many sectors, offering hands-on experience, a qualification and a wage. During an Apprenticeship you spend the majority of your time in the workplace. Apprenticeships offer a range of progression opportunities starting at Level 2 and spanning through to Level 6.



# WHAT ARE SOME OF THE OPTIONS AFTER YEAR 11?



## Some Local Providers Sixth Forms and Colleges



## Possible Local Apprenticeships

Apprenticeship routes



# ATTENDANCE IS KEY TO SUCCESS



## Every School Day Matters

Attendance during the school year	Equates to days absent	Which is approximately	Which means the number of lessons missed
97%	6 days	1 week	36 lessons
94%	10 days	2 weeks	72 lessons
90%	19 days	4 weeks	120 lessons
85%	29 days	6 weeks	180 lessons
80%	38 days	8 weeks	240 lessons
75%	48 days	10 weeks	300 lessons
70%	57 days	11.5 weeks	360 lessons
65%	67 days	13.5 weeks	420 lessons

Attendance 2022-23	Average Grade
Less than 90%	4
90% - 94%	5
95% - 97%	6
98%+	6.5

### The Importance of Attendance in Post-16 Applications

We want to ensure all students have the best possible chance of securing a place at their chosen Post 16 provider. It's important for parents & carers to be aware that many Post-16 institutions have strict attendance requirements, and students with attendance below 95% may be refused a place, regardless of academic ability.

At Beauchamp College, we are committed to supporting every student's success, and regular attendance plays a vital role in achieving that goal. We encourage family's to work closely with us to help maintain strong attendance throughout the academic year.



- Whichever pathway students choose; there are characteristics that they will **need to show in order to get a place**
- Places for many courses / locations are not automatic – **students will need to meet entry criteria- check websites and providers**
- Entrance criteria often are broken down into **Attainment , Attendance and Attitude.**

At Beauchamp College, the reference provided for Post-16 applications is a fair and honest reflection of each student's performance, both academically and beyond the classroom. Our tutors take great care in highlighting students' strengths, achievements, and contributions. The majority of references are highly positive, reflecting the dedication and success of our students. As a result, most Beauchamp students go on to secure places at their chosen Post-16 destinations.

# HOW YOU CAN HELP



## *Supporting Your Child's Journey*

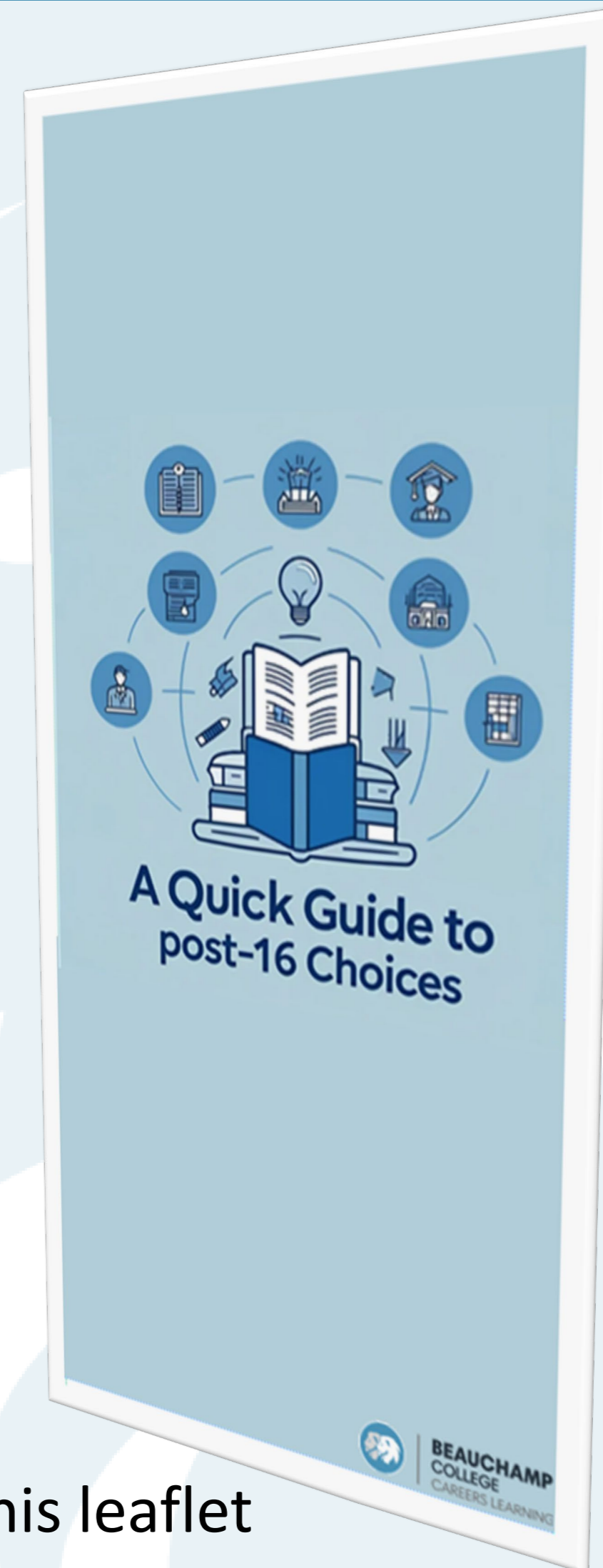
- Talk to them about what they enjoy
- Encourage curiosity about jobs and futures
- Attend events like open days and fairs together
- Stay involved with school communications

The **unifrog** video:

<https://www.unifrog.org/teacher/know-how/preview/for-parents-and-caregivers-what-is-unifrog>

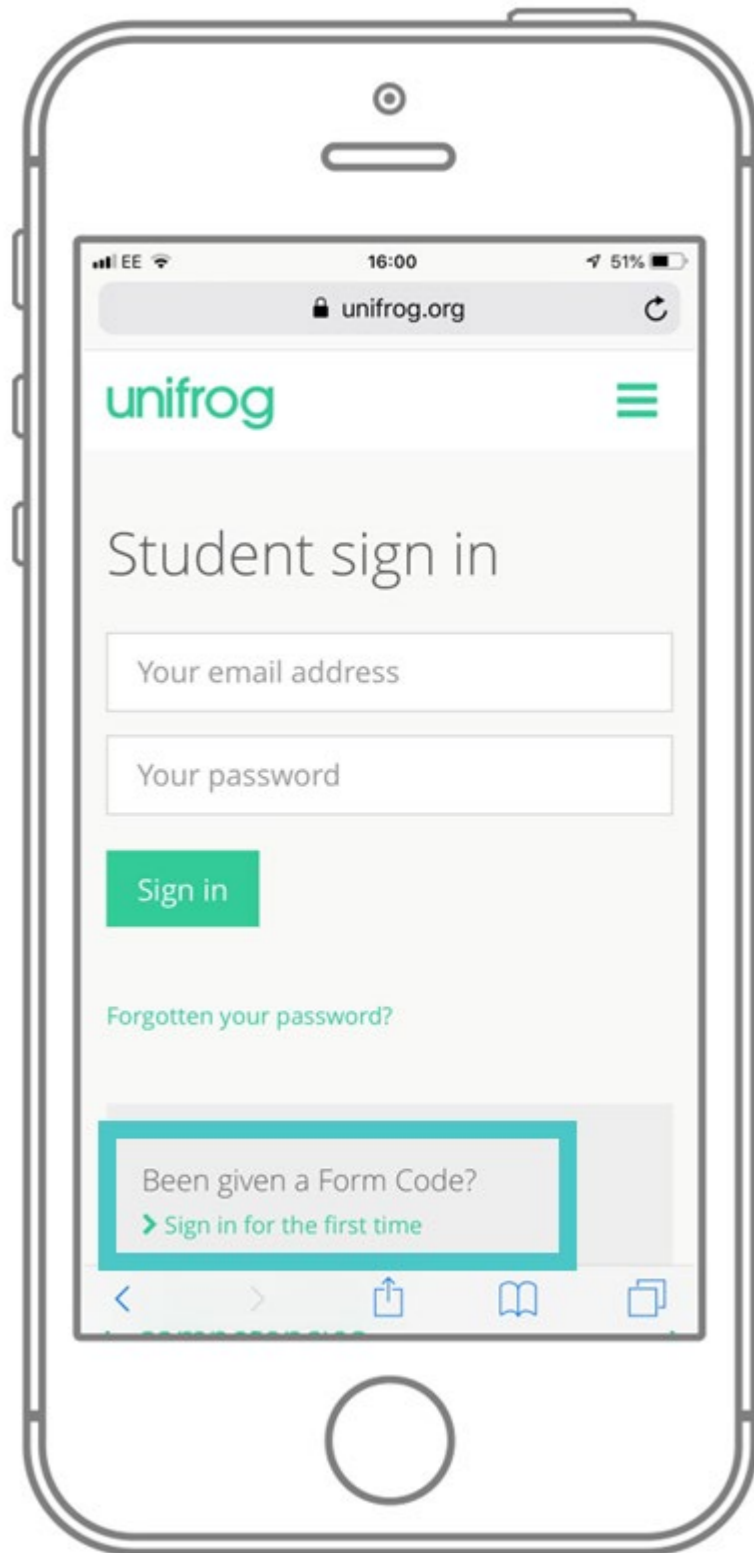
<https://www.loom.com/share/1d856c8220f444faa653fd7f719db5c8>

<https://www.unifrog.org/teacher/know-how/preview/for-parents-and-caregivers-five-ways-to-help-your-child-find-their-ideal-career>



Look out for this leaflet

# PARENTS & GUARDIANS, GET SIGNED UP.



Scan this QR code or go to

[www.unifrog.org/student](http://www.unifrog.org/student) and click 'Sign in

for the first time'

You'll be asked for some details and a Sign up Code. This is what you need:

**BAUPparent**

After signing up, log into Unifrog using your email address and password via the student sign-in page!

# PS16, YOUR ONLINE CAREERS GATEWAY.



Positive Steps @16

Get In Touch [Your account](#) [Log in](#)

Home Opportunities News Events Help & Guidance

About our prospectus

## Welcome to PS16, your Online Careers Gateway.

PS16 is an online prospectus and application system for young people to apply to school sixth forms, colleges and training providers.

Anyone can browse the prospectus to find out more about courses and opportunities, but to make an application you will need your log in details.

[Opportunities >](#)

**Opportunities**  
Helping you make the right choice

Positive Steps @16

Get In Touch [Your account](#) [Log in](#)

Home Opportunities News Events Help & Guidance

## Opportunities

Helping you to make the right choice.

Search for opportunities

What do you want to study? Full time courses [Search](#)

**Full time courses**  
Browse our range of both vocational and academic courses and get your career off to a flying start.

**Employer apprenticeship vacancies**  
Use this search to look for current vacancies.

**Jobs**  
Browse our range of courses

<https://www.ps16.co.uk/>

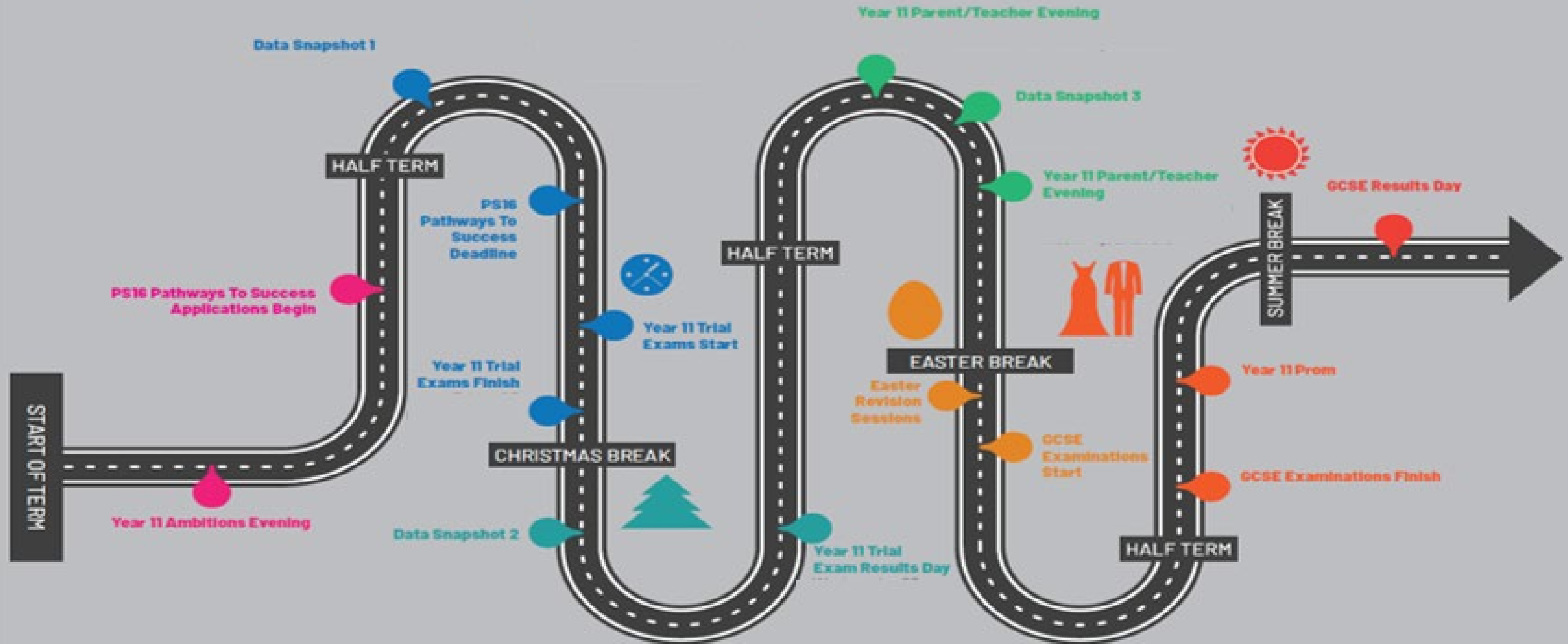
PS16 is an online prospectus and application system for young people to apply to school sixth forms, colleges and training providers. Anyone can browse the prospectus to find out more about courses and opportunities.

PUPIL CENTRED, POSITIVE AND PROFESSIONAL

# STUDENTS YEAR 11 JOURNEY



## YOUR YEAR 11 JOURNEY



PUPIL CENTRED, POSITIVE AND PROFESSIONAL

# WHAT'S COMING UP – YEAR 11 KEY DATES



- From September 2025 – Year 11 Careers 1:1 Interviews , if not happened in year 10
- 4 September 2025 – Year 11 Aspiration Evening with Senior Leadership
- W/C 29 September 2025 – Year 11 Data Snapshot
- 2 October 2025 – Careers Fair (Student Attend during school day )
- 9 October 2025 – Year 11 Parents' Evening
- October 2025 (Date TBC) – Post-16 Portal "How-To" Guide delivered to parents/carers and students
- Ongoing – Tutor Support with Applications
- W/C 24 November 2025 – Trial Exams (Data used in applications)
- 15 December 2025 – Year 11 Data Snapshot
- 18 December 2025 – Post-16 School Application **Deadline**
- 4 February 2026 – Year 11 Parents' Evening
- 16 March 2026 – Year 11 Data Snapshot
- February–March 2026 – Post-16 Offers Expected (Keep a Lookout!)

Our Year 11 form tutors for 2025/2026 will support students throughout the Post-16 application process, offering advice, encouragement, and practical help. While the school provides full support, it is the responsibility of the student and their family to research options, attend open events, and complete applications on time. Together, we aim to ensure every student makes a confident and informed next step.



Julie Archer



Ben Banister



Chris Goodchild



Hidaayah Kandohla



Ruben Sector



Del Bains



Nilesh Champaneri



Neesha Navekar



Vikisha Vaghela



Bhavleen Bains

THANKYOU



*We would love to hear your feedback  
[careers@beauchamp.org.uk](mailto:careers@beauchamp.org.uk)*





**BEAUCHAMP**  
**COLLEGE**  
**CAREERS LEARNING**