



**BEAUCHAMP
COLLEGE**

Lionheart Educational Trust

**YOUR WELCOME
BOOKLET**

Name:

From primary to secondary school

Moving to a new school is an exciting time. We are really looking forward to you joining us at Beauchamp College in a few months and we cannot wait to get to know you and educate you throughout your time with us. This booklet is for you to work through, to feel a little more 'ready' to start with us. At the start of the school year we aim to:

- Introduce your new teachers and support staff.
- Have assemblies with all the new year 7s
- Introduce your pastoral team, your tutor and your tutor group
- Give you a tour of the school
- Show you how the canteen works at break and lunch times.

We hope you are feeling excited about starting at Beauchamp College - here you will begin a brand new journey where you will continue to build on skills that you have learned at primary school.

WE LOOK FORWARD TO MEETING YOU



Welcome

Welcome to Beauchamp College! We're delighted to have you join us. At Beauchamp, we believe in "excellence without exception." Here, we work hard, we are kind, and we embody the 4 Rs: resilience, reciprocity, resourcefulness, and reflectiveness.

As part of the Lionheart Educational Trust, we set high standards and have high expectations. Our culture is built on hard work, outstanding care, guidance, support, and inspiring teaching. With our engaging curriculum taught in world-class learning spaces, you'll be well-prepared for your next steps. We encourage you to strive for your best, take personal responsibility, and enjoy a wide range of academic, cultural, social, and sporting opportunities.

At Beauchamp, we aim for the highest standards in a safe, secure, and positive environment. I'm proud to lead Beauchamp College and look forward to getting to know you better. Let's make this journey together, striving for excellence without exception!

Alice King
Associate Principal

Meet our staff

When you join us, you'll find a dedicated team of staff ready to support you every step of the way. Take a moment to get to know the friendly faces who are here to help you succeed.



Sally Wicken
Executive Principal



Alice King
Associate Principal



Samia De Souza
Vice Principal



Jane Higgitt
Assistant Principal and
Transition Lead



Ebrahim Yunus
Head of Year 7



Ume Ahmed
Associate Head of
Year 7

Our school motto

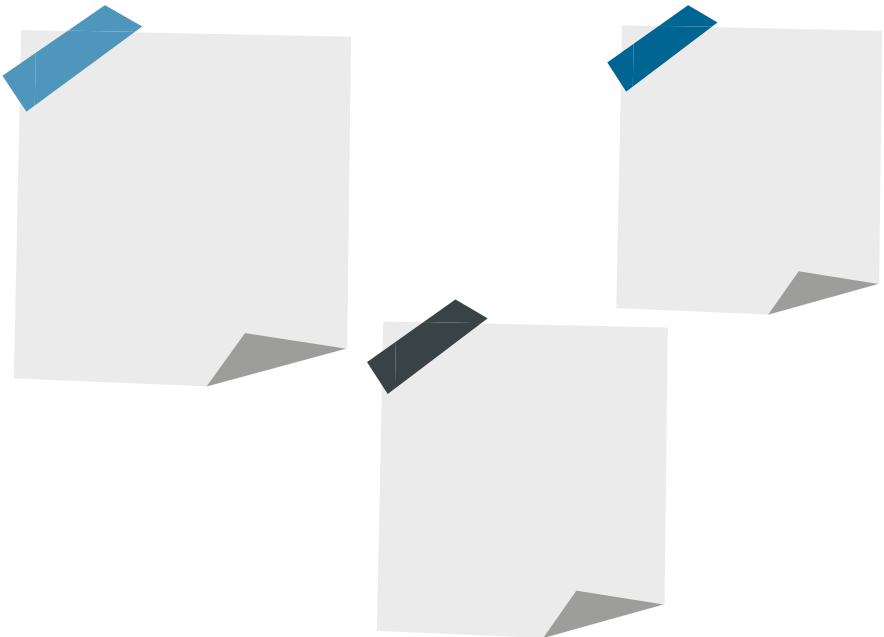
BE KIND, WORK HARD, BE BEAUCHAMP

At Beauchamp College, we believe in creating a welcoming and supportive environment where everyone feels valued. Our school is a community where we all work together to ensure it's a safe and happy place for learning.

Each of you is unique, and we celebrate that. Our focus is on community, development, and learning, helping you grow into a proud and respectful individual.

We have high expectations because we believe in your potential. Our students excel academically and grow as individuals, learning to value themselves and their community.

What do you think these values might look like in action?



The 4Rs

At the heart of our educational philosophy are the '4Rs'. These core values shape everything we do and believe in at our school. On this page, you'll find each of the 4Rs explained in detail.

RESILIENCE

Determination • Ability to bounce back • Persistence • Positivity • Effort •

RESOURCEFULNESS

Self-motivated • Proactive • Organised • Curious • Problem-solver

REFLECTIVENESS

Thoughtful • Reasoning • Questioning • Critical • Imaginative

RECIPROCITY

Collaborative • Supportive • Respectful • Communicative • Approachable

Once you've read through the descriptions, can you match the word to its description?

RECIPROCITY

To have the ability to recover quickly when the going gets tough.

REFLECTIVE

Learning to work together and show care and understanding for each other.

RESILIENT

Considering what needs to be done to take the next steps

RESOURCEFUL

Having the confidence to ask for help and to find answers in new ways.

Times of the school day

To help you get ready to start with us, take a look at the timings of the school day.

ACTIVITY	TIME
Period 1	8.35 am
Period 2	9.25 am
Tutor Time	10.15 am
Break	10.30 am
Period 3	10.50 am
Period 4	11.40 am
Period 5 <i>Please be aware that Lunch 1 is 12.30pm until 1.10pm and not the same as Period 5</i>	12.30 pm
Period 6 <i>Please be aware that Lunch 2 is 1.20pm until 2pm and not the same as Period 6</i>	1.10 pm
Period 7	2.00 pm
End of College Day	2.50 pm



Food and drink

How will I pay for my food and drink?

We run a cashless system where you can pay with your ID card, which your parent/carer can top up on Beehive.

What are the options for breakfast and break time?

Breakfast is served from 7:30am, offering a variety of options such as fresh fruit, bacon rolls, and croissants.

During break time, students can purchase sausage rolls, pizza, pain au chocolat, and vegetable samosas.

Can I bring a packed lunch?

Yes, and there are lots of spaces around the school site where you can eat your lunch and catch up with friends.

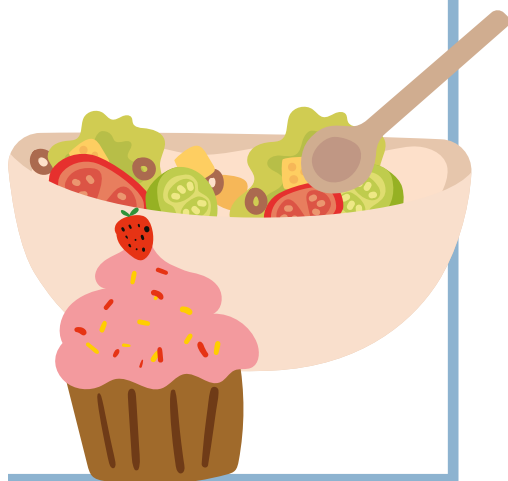
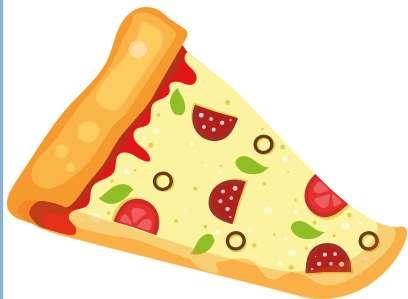
What about Dietary Requirements?

We cater to various dietary needs, including halal, gluten-free, vegan, and dairy-free options.

What's on the menu?



Scan the QR code to have a look at an example menu to see what might be on the menu when you start.

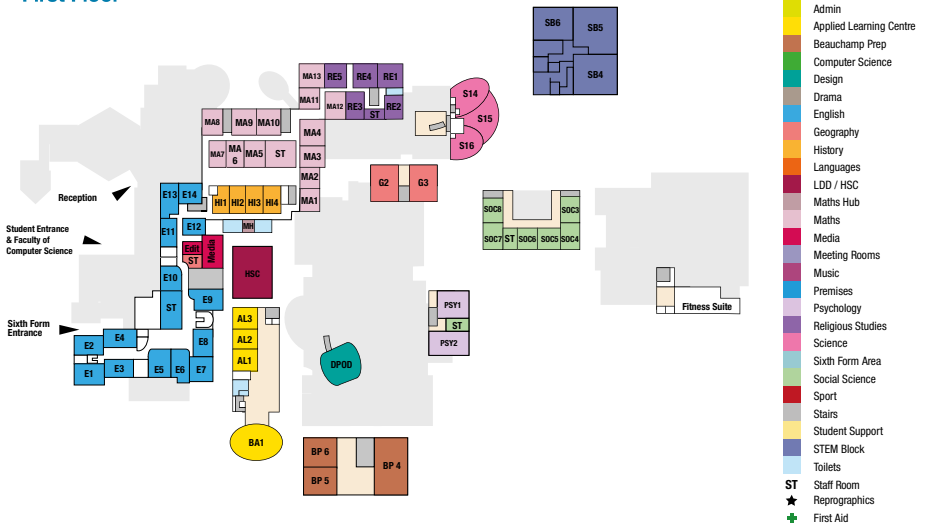


School map

Ground Floor



First Floor



- Admin
- Applied Learning Centre
- Beauchamp Prep
- Computer Science
- Design
- Drama
- English
- Geography
- History
- Languages
- LD / HSC
- Maths Hub
- Maths
- Media
- Meeting Rooms
- Music
- Premises
- Psychology
- Religious Studies
- Science
- Sixth Form Area
- Social Science
- Sport
- Stairs
- Student Support
- STEM Block
- Toilets
- ST Staff Room
- Reprographics
- + First Aid

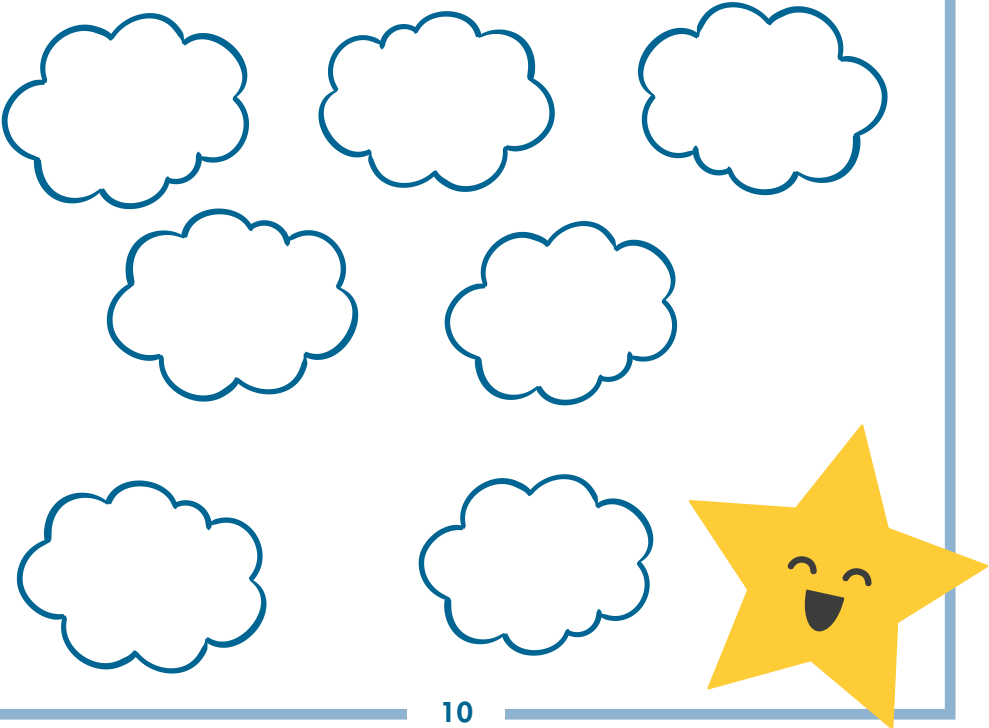
Extra Curricular

We offer a wide range of extra-curricular clubs for students to get involved with. From musical opportunities like band practice and Beauchamp shows, to sports such as football, rugby, and netball, there's something for everyone.

Students can also become part of a Dungeons and Dragons team, fight climate change as part of the ECO club, or learn about new cultures and languages like Mandarin, Japanese and Polish.

When you start with us you will be able to see all the afterschool clubs and book your place on them via Beehive.

Scan to discover more clubs on offer, are there any you can't see that you would like?



My school bag

When you start Beauchamp College one of the main differences is that you will be responsible for all of your equipment and you will take it home each night.

What things do you think you should bring to school each day?



Poetry

At Beauchamp College we believe in learning poetry by heart. Poetry is wonderful because it broadens our horizons, teaches us about life and can turn words into emotions. And when you learn poetry off by heart it becomes a part of you. Below is a poem about resilience. Resilience is the ability to recover from something difficult and keep going. We would like you to spend some time learning this poem off by heart before you start at Beauchamp College.

When you join us, we will say it together.

OZYMANDIAS BY PERCY BYSSHE SHELLEY

I met a traveller from an antique land,
Who said—"Two vast and trunkless legs of stone
Stand in the desert. . . . Near them, on the sand,
Half sunk a shattered visage lies, whose frown,
And wrinkled lip, and sneer of cold command,
Tell that its sculptor well those passions read
Which yet survive, stamped on these lifeless things,
The hand that mocked them, and the heart that fed;
And on the pedestal, these words appear:
My name is Ozymandias, King of Kings;
Look on my Works, ye Mighty, and despair!
Nothing beside remains. Round the decay
Of that colossal Wreck, boundless and bare
The lone and level sands stretch far away."

Moving up

Here are a few activities that you can complete to help you get ready to start secondary school.

- Visit the school website and have a browse to find out as much useful information as possible. You can find the website on **(www.beauchamp.org.uk)**
- Practice packing all the things you will need to take to your new school. Get in the habit of packing the night before.
- Plan the route to your new school and have a few trial runs when it's safe to do so.
- Have a look at the school map and familiarise yourself with the layout ready for your first day
- Get in the habit of going to bed early and getting up early in time to eat breakfast.
- Leave plenty of time to find out about your school uniform and order it. Make yourself aware of school policies on things like jewellery, piercings and mobile phones.
- Take some time to learn the names and faces of important people like the headteacher, your head of year, and your tutor. This way, you'll know exactly who to look for if you need assistance or guidance.

Making new friends

You will meet lots of new people at your new school. It's normal to feel excited, nervous or a mixture of both; here are some ideas that might help:

Get involved

Spend time with others at lunch and break times. Joining a club is a great way to meet new people.

Get to know your friends' friends.

You can meet up in the canteen, on the walk home or you could ask your friend to introduce you to them.

Take the first step

Say 'Hi' or ask how someone's day has been. Giving someone a compliment is a good way to start a conversation.

Be a good supporter

Help people where you can. Just offering a smile or saying 'Hi' could help someone to feel better.

Positive friendships

Real friends encourage you to be the best that you can be. Think about the qualities you would look for in a good friend and what might warn you that a friendship was unhelpful.

Write them in the boxes below.

Positive friendship

Examples:

- Respects my opinions
- Listens to me

TRIP ROADMAP

YEAR 8

Young Victorians - English Trip
China Town in Birmingham
Isle of Wight - 5 day geography residential
4 reward trips (such as, Bowling, Snowdome, Harry Potter Studios, A London show, The London Eye and Shrek World)
End of year trip to Ninja Warriors and Bowling



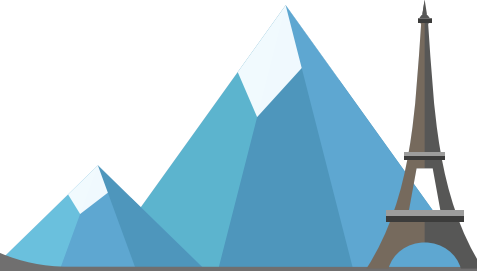
YEAR 7

PGL - 2 day residential
China Town in Birmingham
4 reward trips (such as, Bowling, Snowdome, Harry Potter Studios, A London show, The London Eye and Shrek World)
End of year trip to Yorkshire Wildlife park



YEAR 9

DT Technology Tournament
French Trip to Paris
Mandarin trip to China
4 reward trips (such as, Bowling, Snowdome, Harry Potter Studios, A London show, The London Eye and Shrek World)
End of year trip to Drayton Manor



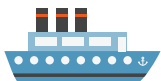
YEAR 10

Drama Theatre trip
RE trip - Candle Conference
Geography Peak district
Sicily - 4 day geography residential
4 reward trips (such as, Bowling, Snowdome, Harry Potter Studios, A London show, The London Eye and Shrek World)
End of year trip to Alton Towers



YEAR 11

Madrid - 4 day Spanish residential
The Curve theatre trip
Nottingham Theatre Royal
DeMonfort University
RE trip - Candle Conference





**BEAUCHAMP
COLLEGE**

Lionheart Educational Trust