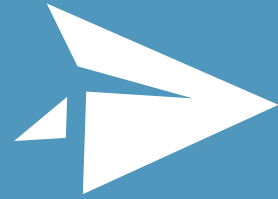




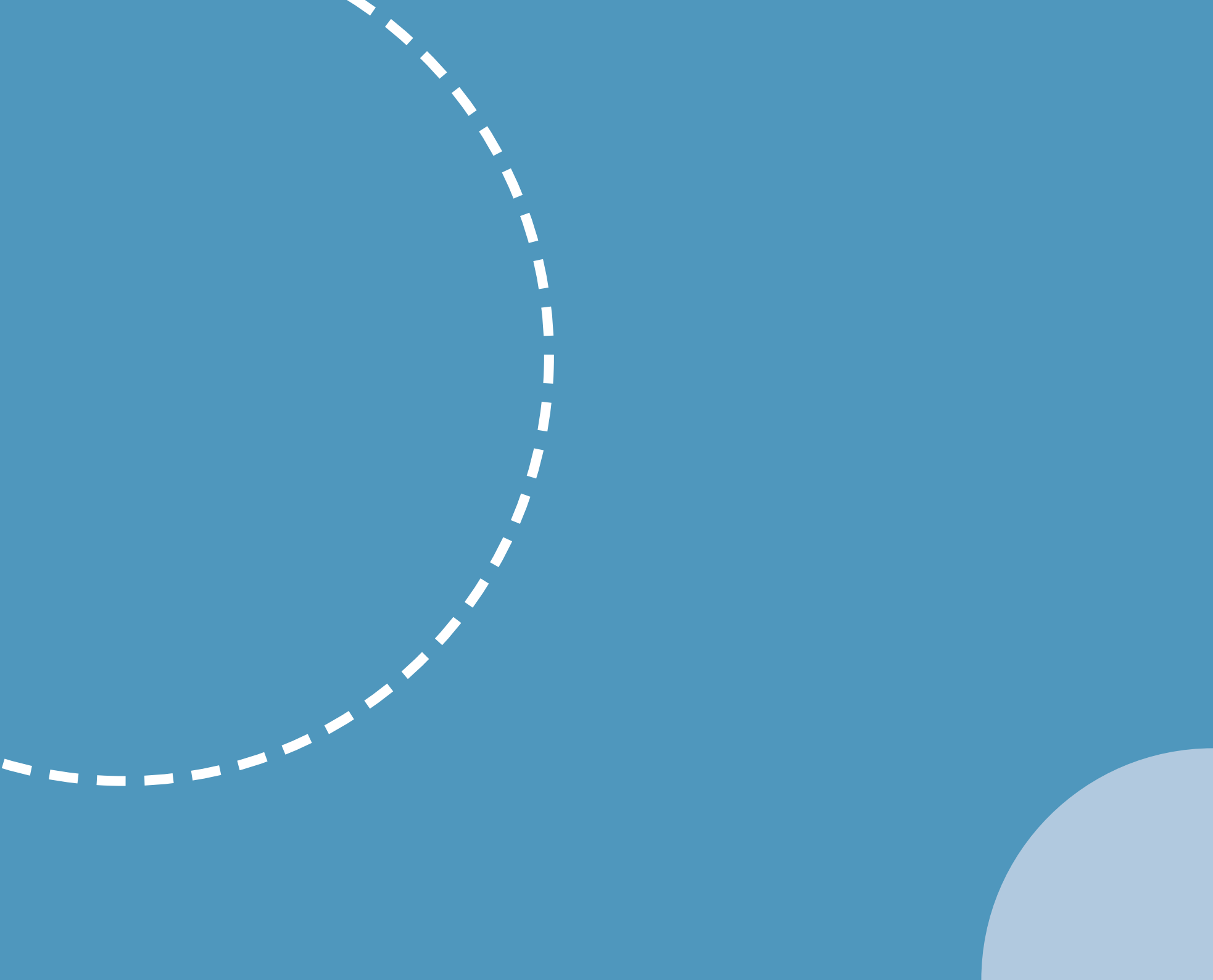
**BEAUCHAMP
COLLEGE**
Lionheart Educational Trust



**SIXTH FORM
PROSPECTUS**

**Above
and
beyond**





CONTENTS

WELCOME FROM OUR EXECUTIVE PRINCIPAL AND TRUST CEO	5
ASSOCIATE PRINCIPAL AND HEAD OF SIXTH FORM INTRODUCTION	6
YOUR SIXTH FORM	7
COURSE LIST.....	8
ENTRY REQUIREMENTS.....	10
SUPPORTING YOU.....	12
BEYOND STUDY	18
ABOUT BEAUCHAMP	21
OUR TRUST	23





WELCOME

FROM OUR EXECUTIVE PRINCIPAL AND LIONHEART EDUCATIONAL TRUST CEO

We are proud of our comprehensive college and its history of providing opportunities for all students to achieve their full potential. As our students come from a range of cultural, ethnic, economic, linguistic and faith backgrounds, this has greatly enriched our daily college experience as we learn together and from one another. Inspired by this diversity we believe in pursuing excellence and equity for all. As a result, every year our students prove they can compete successfully in all fields as they move onto university, work and other training opportunities such as apprenticeships.

Our young people live in a complex and ever changing world. They will be offered opportunities and will face new and yet to be defined challenges. To prepare our students for this we encourage them to become confident, resilient, aspirational and active young adults. We nurture a sense of belonging with a caring pastoral structure providing every student with a daily tutorial session in a house system that offers both academic and personal support. We focus on respect for oneself and others and expect all students to play an active part in contributing to the college community.

This prospectus will give you a brief flavour of what we offer but we would encourage you to take the time and opportunity to visit us as you consider joining the college.

We invite you to come and share our passion for learning.



Kath Kelly
Executive Principal &
Lionheart Educational Trust CEO



INTRODUCING

OUR ASSOCIATE PRINCIPAL AND HEAD OF SIXTH FORM

Beauchamp College's sixth form prospectus is designed to give you a taste of sixth form life at Beauchamp and encourage you to make us your choice for Post-16 education.

Making a decision about what and where to study after GCSEs can be a daunting prospect. We believe that we offer everything you need to make a success of the next stage of your education. We put as much into your personal progress as your academic success, offering support through our dedicated sixth form pastoral team who are there to help whatever your needs may be.

Teaching staff are equally supportive and positive working relationships create a great atmosphere in and out of the classroom. A range of extra-curricular opportunities, designed to support holistic development, will help to broaden your prospects.

We feel privileged to work at Beauchamp and believe it is a fantastic college that provides our students with a high quality education, continual support and a huge range of other opportunities, which this prospectus reflects. To get a flavour of this we invite all prospective students and their parents/carers for a tour of our college during a regular working day so that you can get a true view of our daily college routine.

If you need more information about our courses, entry requirements, the application process or just want to get a taste of life at Beauchamp please visit our website: beauchamp.org.uk and click on 'Prospective Students'.

We wish you every success with your GCSEs and look forward to welcoming you to sixth form at Beauchamp.



S. Wicken
Sally Wicken
Associate Principal



John
John Oswin
Head of Sixth Form

YOUR SIXTH FORM

AT BEAUCHAMP COLLEGE

Providing you with the opportunity to be the best you can be is central to everything we do at Beauchamp College. Your future is important to us, so we ensure you have the best teaching and support for academic success, alongside time for enrichment and holistic development.

As a Routes to Resilience accredited sixth form, we develop mature, well-rounded and strong-minded individuals who are ready for life after college. Every student's voice matters and we provide platforms for you to be heard and become leaders of the future.

We don't just leave your success at sixth form down to chance. We structure your timetable to ensure that alongside your classes, you:

- Meet your dedicated tutor daily so they can offer any advice and support you might need.
- Have silent study sessions to give you dedicated time to complete your work outside of lessons without distraction.
- Can get involved in extra-curricular activities, such as Student Council, mentor younger students and take part in sports clubs.
- Have downtime in the dedicated sixth form centre where you can catch up with friends and make new ones.

We are dedicated to ensuring that you enjoy your time at sixth form while striving for academic success. In return we ask that you commit to the same; embracing opportunities for self-development, alongside studying to your full academic potential.



**“AT
BEAUCHAMP
SIXTH FORM,
OUR TEACHERS
CARE ABOUT OUR
EMOTIONAL AND
SOCIAL DEVELOPMENT.
THEY ALWAYS PROVIDE
OPPORTUNITIES
TO BROADEN OUR
KNOWLEDGE AND
DEVELOP OUR SKILLS.”
SARAH**

COURSE LIST

WHAT COULD I STUDY?

A LEVELS

Our A-level curriculum is expertly crafted to not only build on existing knowledge and skills learnt at GCSE level in related subjects, but also to be refreshing, exciting and new. A-Level study is often both challenging and demanding, requiring a delicate balance of independent work and lesson time. With this in mind, we believe that passionate teaching nurtures an innate love for learning; both inside and outside of the classroom.

APPLIED LEARNING

Applied learning is not only about vocational subjects, it is about adding value to all aspects of the curriculum. Students experience learning in different contexts including from adults with an industry background, skills and experience. These courses connect academic content with the real world. Through applied learning courses, students develop 21st century employability skills such as communication, teamwork, reliability and integrity. The applied learning courses on offer at Beauchamp are equivalent to one A Level. Students can study one applied course and two A Levels or two applied courses and one A Level.

EXTENSION COURSES

Year 12 students on two-year courses also study an extension course. These courses are designed to allow students to develop other interests, experience a new challenge and add some contrast to their academic studies. In a competitive world, we are confident that broadening the curriculum will help provide the breadth of study and skill set that universities, training courses and employers are expecting.



HOW DO I DECIDE WHAT SUBJECTS TO CHOOSE?

Making an informed decision about which courses to choose is key to your success and requires careful consideration and discussion with teachers and parents/carers. Make sure you choose courses that reflect your interests, passions and plans for the future, and support any university course or career you are considering. Having a genuine passion and interest for the subjects you choose will be key to sustaining your work ethic, ensuring that you are embracing and enjoying your time in sixth form.

BEAUCHAMP COLLEGE HAS A LARGE ARRAY OF A LEVEL, APPLIED LEARNING LEVEL 3, AND EXTENSION COURSES ON OFFER*

LEVEL 3: A LEVELS

Biology	Product Design	Film Studies
Chemistry	Graphic Communication	Geography
Physics	Accounting	History
Psychology	Business	Media Studies
Geology	Economics	PE
English Literature	Computer Science	Philosophy & Ethics (RS)
Mathematics	French	Politics
Further Mathematics	Spanish	Sociology
Fine Art	English Language & Literature	Theatre Studies (Drama)

LEVEL 3 APPLIED COURSES

Health & Social Care	ICT	Music Technology
----------------------	-----	------------------

EXTENSION COURSES

Criminology	Accelerated Computer Science	Accelerated Sociology
Core Maths	Extended Project Qualification (EPQ)	Certificate in Financial Studies (LIBF)

FOR MORE DETAIL ON SPECIFIC SUBJECT INFORMATION, SCAN HERE



**Please note courses offered may be subject to change.*

ENTRY REQUIREMENTS

OUR CURRICULUM OFFER SUPPORTS YOUNG PEOPLE IN BECOMING RESPONSIBLE AND WELL-ROUNDED CITIZENS.

FOR YEAR 12 ENTRY 2022

All students will be asked to resit GCSE Mathematics and/or English Language if they have not achieved at least a grade 4.

LEVEL 3: APPLIED LEARNING

Applied Courses

- Level 3 Courses are studied in combination with A Levels.
- At least 6 grade 5s (or equivalent) including grade 5 in English Language or Literature.
- Students must have a minimum of a good pass grade in the relevant subject (if taken) at Level 2.

LEVEL 3: A LEVELS

General entry requirements 6 grade 5s (or equivalent), including at least grade 5 in English Language or Literature and at least a 5 in your chosen subject if studied at GCSE, unless stated in the table opposite.

Please see our Admissions Policy at:
beauchamp.org.uk/admissions-2

Admissions

☎ 0116 272 9100

✉ admissionsks5@beauchamp.org.uk



SPECIFIC ENTRY REQUIREMENTS FOR SUBJECTS

AREA	SUBJECTS	REQUIREMENTS
Science	Biology Chemistry Physics	6 or above in at least 2 Sciences (one of which has to be the science you wish to study) and a 5 or above in Maths
Science (other)	Psychology Geology	5 or above in Maths and Double Science
English	English Literature	6 or above in English Literature
Maths	Mathematics Further Mathematics*	6 or above in Maths 8 or above in Maths
Art and Design	Fine Art Product Design Graphic Communication	5 or above in a Design/Art based subject or an interview to look at a portfolio of work
Business	Accounting Business Economics	5 or above in Business Studies/Economics if taken 5 or above in Maths
Computing	Computer Science	6 or above in Maths 6 or above in Computing if taken at GCSE
Languages	French Spanish	6 or above in the relevant Language
All other subjects	English Lang/Lit* Film Studies Geography History* Media Studies PE Philosophy & Ethics (RS)* Politics Sociology* Theatre Studies (Drama)	General entry requirements including at least a 5 in the relevant subject if taken *5 in English Language recommended

* Further Mathematics: students wishing to take Further Mathematics must take three other A Levels, one of which will be A Level Mathematics. Please note courses offered may be subject to change: up to date information will be available on our website.

SUPPORTING YOU

THROUGH YOUR SIXTH FORM JOURNEY

Whether through personal support, facilities, expert advice or links with universities and employers, we offer enhanced guidance and resources to our sixth form students.

APPLIED LEARNING CENTRE

This modern and well-stocked area is wide ranging and reflects its aim to be the central point of information for the college; to provide resources for recreation and enjoyment and to support students and staff in their studies. Staff members ensure the resources on offer match the curriculum needs. Access to the Internet is available through networked PCs with further services such as the loan of books and other materials, including DVDs, audio-visual equipment, daily newspapers, monthly magazines and subject related periodicals.

TECHNOLOGY

From Apple Macs for video editing and audio mixing to Windows PCs, Beauchamp is a technology-rich college. Students who bring in phones, laptops, and other devices for study can log into the student Wi-Fi.





SIXTH FORM STUDY CENTRE

This space dedicated to sixth form study, allows for quiet study, a time to see friends and a great opportunity to get involved in sixth form life.

STUDENT SUPPORT CENTRE

Our wide-ranging support measures are focused on student wellbeing, including emotional, social and financial needs. Students are welcome to visit the Student Support Centre, where the team can help with transport queries, paying for school trips, free school meal applications and lost property, among other queries. The Student Support Centre can refer students on for more specialist advice where required.

**“YOU’RE
NEVER ON
YOUR OWN AT
BEAUCHAMP.
IF YOU HAVE A
PROBLEM, THERE’S
ALWAYS SOMEONE
TO TURN TO FOR
SUPPORT”
JAYA**

TUTOR TIME

Every sixth form student will attend tutor time daily, where they will be part of a tutor team with their peers and can discuss any queries or concerns - whether a personal matter, academic issue or social concern - with their dedicated tutor. Tutor time really helps students feel part of life at Beauchamp College, taking part in 'House Events' and learning about how they can get involved in extra-curricular opportunities. Tutors get to know their sixth form students well, and can therefore help support students to achieve academic success and make the next step into work, university or training.



POSITIVE WELLBEING

Students in our sixth form have a variety of support built around positive mental health and wellbeing. Students are offered advice should they need it and support may include how to deal with stress, self-esteem, health or relationship issues. We also have trained mental health first-aiders and ambassadors.

The first aid room is also open during the school day to administer first aid, offer advice on physical and health, or arrange for students to go home if unwell.

FINANCE

The Government introduced a Post-16 Bursary Scheme to enable schools and colleges to provide some financial support where a student's financial circumstances are a barrier to their learning. Beauchamp College has joined together with other sixth forms in Leicestershire to provide the Leicestershire Sixth Form Bursary Scheme.

A bursary is available to young people who are:

- In care and care leavers
- In receipt of income support
- On free school meals
- Disabled and in receipt of both Employment Support Allowance and Disability Living Allowance.

**Further information on the 16-19 bursary is available through the admissions process.*



DO WE HAVE A STUDENT CARD?

You are provided with an ID card on a lanyard which must be worn at all times when on site. It provides access through the electronic gates and into the main building. It is also used to pay for lunch and snacks in the canteen, to borrow books and equipment from the library, and to access the printers and copiers. You will also need it when sitting your exams.



UNIVERSITY OF LEICESTER

UNIVERSITY OF LEICESTER PARTNERSHIP

Our exclusive partnership with the University of Leicester enables us to work closely with them, meaning having access to high quality talks and events, or being able to use some of their state of the art facilities (subject to availability).



"STUDENTS ARE ENCOURAGED TO TAKE PART IN A HUGE RANGE OF EXTRACURRICULAR OPPORTUNITIES. I KNOW THAT BEAUCHAMP WILL HELP ME ONTO MY NEXT STEPS."

EDWARD

UCAS

Our UCAS Support Team offers ongoing advice and guidance to students considering the transition to Higher Education. The team facilitates application and personal statement support, aids teaching staff in supplying the relevant references, and organises an annual trip to the UCAS convention. Beauchamp College also has a dedicated UCAS Champion, who provides guidance and advice to students considering their next steps.

We offer tailored support for early applicants considering Oxbridge, and Medicine-related Degrees, with support starting as early as Year 12, facilitated by a 'High Achievers' Evening' attended by the likes of Russell Group Universities, Medicine Admissions Teams and more.

ADVICE & GUIDANCE

The College benefits from an expert Careers Advisor who delivers a one-to-one service, aimed at supporting progression beyond Beauchamp. The Advisor works alongside the Advice, Guidance and Progress team to assist with applications, CVs, interview preparation, employment security and apprenticeships. The team also facilitates work experience, careers fairs, A Level and vocational taster sessions and trips to Colleges and Universities. We also provide talks on Apprenticeships, UCAS and Careers on a regular basis.

We also have dedicated careers talks for sixth form students across our Trust.

**"MY TEACHERS ARE
FANTASTIC – THEY
ARE ALWAYS THERE
TO SUPPORT YOU,
SO LEARNING
ALWAYS HAS A
PERSONAL FEEL."**

ETTA



BEYOND STUDY

ENRICHMENT OPPORTUNITIES ENSURE STUDENTS ACQUIRE TRANSFERABLE SKILLS



STUDENT EXECUTIVES

Elected by students to provide a channel for student voice, our Student Executives play a prominent role throughout the college and our wider community. Regular meetings and focus groups support them in actively improving Beauchamp through research and proposals for change. New Student Executives are elected each academic year, giving new students to our sixth form a chance to get involved.

DUKE OF EDINBURGH AWARD

Highly respected by employers and higher education, the Duke of Edinburgh Award programme offered at Beauchamp is known and celebrated for encouraging personal development and togetherness. Experience tells us that the award provides a young person with new insights into their capabilities. Each level of the Award has four or five elements that have to be completed typically over three to twelve months depending on the level. These cover; volunteering, physical skills, expedition and residential (Gold only).

THE HOUSE SYSTEM

Beauchamp College is divided into five houses – Drakon, Wyvern, Titan, Phoenix and Pegasus – with each comprising tutor groups from each year group. Sixth form students, within their houses, participate in a variety of competitions and events – both sporting and non-sport related – to gain house points and win the House Cup at the end of the year. Students play an active role in organising and running house activities and are given the opportunity to represent their house as tutor representatives and house captains.

SPORTS ACTIVITIES AND TEAMS

Our state-of-the-art Sports Hall, 3G Pitch and Fitness Suite are popular with students and provide fantastic facilities for students to engage in sporting activities including Badminton, Netball, Hockey, Football and Basketball, among many others. Students may also wish to try some of our more unique activities such as fencing or trampolining.

SUPPORTING YOUNGER STUDENTS

Being part of a wider college provides sixth form students with easily accessible opportunities to enhance their skills through working with younger students in years 7 to 11. Opportunities for sixth formers include becoming Social Time Leaders where they will facilitate breaktime activities, as well as subject specific mentoring of younger students. These extra-curricular activities help sixth form students with their confidence as well as leadership and organisation skills, all of which add to skills gained for life beyond sixth form.



I HAVE A PART TIME JOB, HOW MANY HOURS PER-WEEK SHOULD I WORK?

We recognise that some of you work part-time. We recommend you should work for no more than 10-12 hours per week. Research shows any more than this could be detrimental to your studies.

HIGH FLYERS

High Flyers support is designed for any student who wants to go beyond their subject, with support including attendance to university lectures, trips to universities or the workplace, and involvement in competitions and leagues. Our exclusive partnership with the University of Leicester means our students have access to high quality talks and events, state of the art facilities and renowned academics. Students also have the potential to receive a bursary, should they choose to study at the institution.

ACTIVITIES & SOCIETIES

Extra-curricular activities are wide and varied, with new activities added according to student interest.

They include:

- Café Scientifique
- Classics Club
- Debate (ESU Mace League)
- Journal of Excellence
- Music Technology

Societies are led by students, for students, and therefore reflect a wide range of interests and topics. In recent years, students have set up societies such as:

- Afro-Caribbean
- Acapella
- Debating
- Drama
- East Asian
- Feminist
- French
- ECO
- ISOC (Islamic)
- LAW
- LGBTQ+
- Medicine

TRIPS

Out-of-classroom learning makes a unique contribution to a student's education and offers many varied benefits. At Beauchamp College, students have many opportunities to access these activities within various departments.

Students and staff have previously travelled to Peru and Tanzania to take part in voluntary work with Camps International Expeditions and also had the opportunity to travel to Los Angeles with Media Studies. Many other trips have taken place both abroad and in the UK, developing and deepening classroom learning and skills of value beyond life at Beauchamp.



ABOUT BEAUCHAMP

PROVIDING ACADEMIC EXCELLENCE WITH HOLISTIC DEVELOPMENT IN AN INSPIRING LEARNING ENVIRONMENT

TRANSPORT

WALKING & CYCLING

We encourage students to adopt a healthy lifestyle and walk or cycle into college where possible. We have numerous bike stands across our campus where students can store their bikes securely throughout the college day.

CAR

For students who have passed their driving test, we have dedicated parking, but this is limited.

BEAVER BUS

For students that find it challenging to access Beauchamp College, we offer a non-local authority transport service through Beaver Bus which covers the north and south of Leicester.

The areas* that this bus service covers are: Beaumont Leys, Birstall, Blaby, Bushby, Countesthorpe, Evington, Fleckney, Glenfield, Great Glen, Gypsy Road, Hamilton, Houghton on the Hill, Humberstone, Kibworth, Kilby, Knighton, Littlethorpe, London Road, Melton Road, Narborough, Netherhall, Rushey Mead, Scraptoft, South Wigston, Stoughton, Thurmaston, Thurnby, Thurnby Lodge, Whetstone, Wigston Magna.

PUBLIC BUS SERVICE

Students can reach Beauchamp College from Leicester City Centre and along the A6 using the 31A Arriva Bus which drops off by the college gates. For students travelling from Market Harborough the X3 Arriva Bus stops on the A6 and is a 5-10 minute walk on to Beauchamp College.

**Subject to change. Check with Beaver Bus for up-to-date routes.*

WHAT IS THE DRESS CODE?

Although Beauchamp College sixth form does not have a uniform, our dress code plays an important role in contributing to the ethos of the college and wider school. Therefore, we allow students to express themselves as individuals in an appropriate and modest way while dressing suitably for a working environment.



FACILITIES

We are proud of our College which boasts clear open spaces and lots of natural sunlight as well as open areas for students to enjoy.

Students enjoy use of well-equipped, state-of-the-art classroom spaces, including specialist facilities in science, performing arts, art/design and computer science. Their learning environment provides both stimulation and inspiration enabling students to access the curriculum in the most effective way.

Sixth form students have their own dining facility and large open recreation space where they can eat, relax and catch up with friends. This indoor area, along with outside space including table tennis tables and picnic benches, is well-received by students.



ALUMNI

We're incredibly proud of all our alumni; many of whom have gone on to achieve remarkable successes. With resilience, hard-work and determination, they truly embody what it means to be a part of Beauchamp, and have been shaped by their experiences with us.

**DR. DREW PURVES
(GRADUATED 1995)**
Drew is a Research Scientist at DeepMind.



In 1998 Drew studied at the University of Cambridge before going on to study a PhD at the University of York, followed by a Post Doc at Princeton.

After an eight-year journey with Microsoft Research, he was then approached by DeepMind to help design virtual environments. Drew is the Co-Creator of the Madingley Model, and was included in Wired Magazine's 2012 'Smart List' as one of 50 people who will change the world.

**MOLLY JOHNSTONE
(GRADUATED 2019)**
Molly, a recent Beauchamp graduate, secured a highly competitive apprenticeship in Digital Marketing with Google in 2019, after a series of interviews and shortlists.



She's currently based in the London Office, and specialises in SEO and Analytics; working with major clients. Molly credits her lessons in business at Beauchamp, alongside a supportive network of teachers and family in helping her to succeed.

**ALYSHEA CHAND
(GRADUATED 2016)**
Alyshea Chand partook in the BBC's Journalist Apprenticeship Scheme.



After graduating from Beauchamp, Alyshea worked as a Marketing Intern for a Publishing Company, before deciding to apply to the BBC's coveted Digital Journalism Apprenticeship Scheme.

She successfully received a place on the scheme, and has worked at BBC Leicester while studying for her NCTJ Diploma in Journalism.

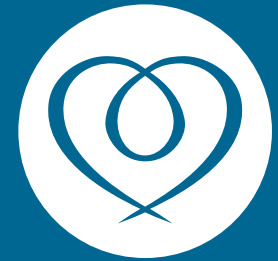
**DR. RHAANA STARLING
(GRADUATED 1995)**
Rhaana is an Associate Professor of Astrophysics at the University of Leicester.



Rhaana studied Astrophysics (MSci) at St. Andrews University, then working as a Research Assistant at the Harvard-Smithsonian Centre for Astrophysics before taking up a PhD position at UCL. Research for her PhD continued at the University of Leicester, where she now resides as an Associate Professor. In 2011, Rhaana was awarded a Royal Society Dorothy Hodgkin Fellowship, and has been a co-chair for NASA review panels and an operations scientist for NASA Swift mission.

OUR TRUST

THE LIONHEART EDUCATIONAL TRUST WAS FOUNDED IN APRIL 2014 IN ORDER TO ESTABLISH A FOUNDATION FOR THE IMPROVEMENT AND ENHANCEMENT OF EDUCATIONAL PROVISION IN THE EAST MIDLANDS.



**LIONHEART
EDUCATIONAL
TRUST**

Our aim is to provide a range of educational experiences that are challenging, equitable, enjoyable and are able to break down any barriers so that all can succeed. This involves seeking to create lifelong learners and offer outstanding provision for our 4-19 year olds.

Our educational mission is simple; any young person from any background deserves an equal chance to be successful in whatever they choose to do. The Lionheart Educational Trust is committed to supporting young people to open doors to their futures and to feel confident that they can thrive in a competitive and ever-changing world.

We pledge this commitment through limitless enthusiasm and optimism to provide a platform for each young person's light to shine brightly. To fulfil our pledge, we commit to the 3 Ps: Pupil Centred, Positive and Professional. We know that promoting this positive and proactive approach that celebrates success unites school communities and breaks down barriers to learning.

As our journey continues, we believe that it is our moral imperative to continue to work closely with a range of educational providers so that as many young people can benefit from the high educational standards we set ourselves. For more information, please visit our Trust website at www.lionhearttrust.org.uk

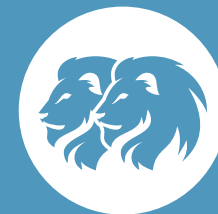




BEAUCHAMP COLLEGE

Ridge Way, Oadby
Leicestershire LE2 5TP

-  **0116 272 9100**
-  **info@beauchamp.org.uk**
-  **www.beauchamp.org.uk**
-  **@BChampCollege**
-  **beauchampcollege**



**BEAUCHAMP
COLLEGE**



**LIONHEART
EDUCATIONAL
TRUST**